

# VISITORS GUIDE

Thanks @mikericcipho for  
capturing your #MyTupelo  
moment at the Elvis Presley  
Birthplace and Museum!



**Tupelo's Visitors  
Center**  
Page 2



**The Elvis  
Experience**  
Page 3

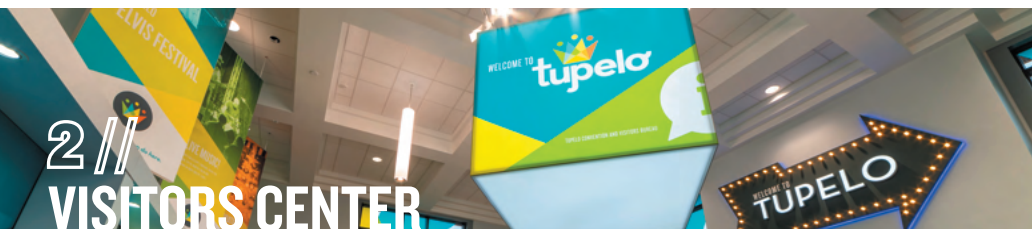


**Where Tomorrows  
are Made**  
Page 21



# CONTENT

From electricity to Elvis Presley, Tupelo has always been at the forefront of progressive thinking. The city has renewed itself many times, but one thing has remained true always ... Tupelo is an upbeat, happy city where people believe they can accomplish anything. **#VisitMSResponsibly**



2 // VISITORS CENTER



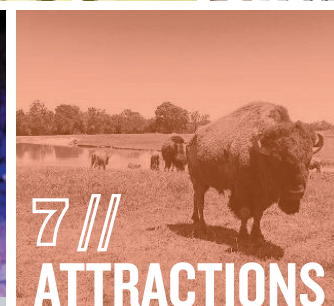
3 // ELVIS EXPERIENCE



5 // SHOPPING



6 // LIVE MUSIC



7 // ATTRACTIONS



16 // RESTAURANTS



17 // LODGING



19 // RECREATION GUIDE



20 // GENERAL INFO



## CONNECT WITH TUPELO



Use **#MyTupelo** for a chance to be featured in Tupelo's upcoming promotions.

## PLANNING TOOLS

**ASK A LOCAL //** There's no better place to get the skinny on attractions, food, and hang-outs than from a true local. Log into **tupelo.net** and ask our featured locals anything you'd like to know!

**"BEST OF TUPELO" LISTS //** Do you want a step-by-step guide of how to enjoy **#MyTupelo**? Just go to **tupelo.net** and hit up our "Best of Tupelo" lists. We've put together lists of all of our favorite things to share with you.

**PRE-PLANNED ITINERARIES //** Too busy to plan? We've crafted 18 itineraries based on everything from girlfriend getaways and history and heritage weekends to Elvis Journeys and put them all on **tupelo.net** for you. All you have to decide is who to bring with you.

**BLOG //** Getting to know a destination before you go gives you that special connection and makes your trip more fun. Visit our blog at **tupelo.net/blog** to read about **#MyTupelo** and get to know a little about us.

*Like, Follow and Share **MyTupelo** on social media!*





# VISITORS CENTER

## The Tupelo Visitors Center

is the perfect starting point for any trip to the city where anything is possible. From interactive exhibits that highlight the city's top attractions and a collective timeline of Tupelo's rich history, to displays focused on Elvis' childhood in Tupelo as told like never before, the Tupelo Visitors Center will fully prepare visitors for exploring this unique, southern town.





## ELVIS EXPERIENCE



### Exhibits

These exhibits are all located on the grounds of the Elvis birthplace and viewable without charge:

- Walk of Life
- "Elvis at 13" statue
- "Becoming" statue
- "Elvis' Early Years" film
- Mississippi Blues Trail Marker
- Mississippi Country Music Trail Marker
- Mississippi Historic Landmark Marker
- Elvis Presley Memorial Chapel
- Story Wall
- Fountain of Life
- "Memphis Bound" car exhibit
- Gift Shop
- "Reflections" pond



These top-notch interpretive exhibits located on the grounds of the birthplace are well worth the small price of admission:

- Birthplace House Tour
- Elvis' Childhood Church
- Elvis Presley Birthplace and Museum



## Tupelo, Mississippi Elvis Driving Tour

*Featuring the places he frequented in his youth...*



Previous Site of Assembly of God Church

Mud Creek Swimming Hole

Johnnie's Drive-In

Lawhon Elementary School

Tupelo Visitors Center & Previous Site of Shakerag

The Elvis Homecoming Statue

Previous Site of Tupelo Fairgrounds

Tupelo Hardware Store

Lee County Courthouse

Lyric Theatre

Lee County Library

Milam Junior High

Previous Site of Mayhorn's Grocery Store



Elvis Presley Birthplace & Museum





Tupelo is proud to offer a shopper's paradise with a diverse collection of one-of-a-kind shops, outlet stores, pottery shops, antique shops, unique bookstores, consignment boutiques, and a regional mall. Three of our most distinct shopping areas are historic Downtown Tupelo, Midtown District, and the area surrounding the Barnes Crossing District, but the shopping is great all over, so hit all the nooks and crannies, and you are sure to find a shop you love.





## LIVE MUSIC

It's a no-brainer to seek out music while in the birthplace of Elvis! Ask a local — we all keep our ear to the ground for the beat of the drum — or visit **tupelo.net** and the events calendar for up-to-date live music listings. Below is a quick guide to live music venues to get you started:



### Amsterdam Deli & Grill

128 Main St.  
@amsterdamdeli

### Blue Canoe

2006 N. Gloster St.  
bluecanoebar.com  
@Bluecanoetupelo

### Downunder

2006 N. Gloster St.  
downundertupelo.com  
@downundertupelo

### Nautical Whimsey

210 Main St.  
@Nauticalwhimseyofficial

### Romie's Grocery

804 W. Jackson St.  
romies.net  
@romiesgrocery

### Steele's Dive

4187 Main St.  
steelesdive.net  
@steelesdive

### Woody's

619 Gloster St.  
woodyssteak.com  
@tupelosteak





## ATTRACTIONS



### **Tupelo Visitors Center**

399 East Main Street

662-841-6521

tupelo.net

Free admission

See pages 2 for detailed information



### **Elvis Presley Birthplace**

306 Elvis Presley Drive

662-841-1245

elvispresleybirthplace.com

Admission to some exhibits,  
others free

See page 3 for detailed information





# ATTRACTIONS



## Vietnam Veterans Replica Wall Memorial

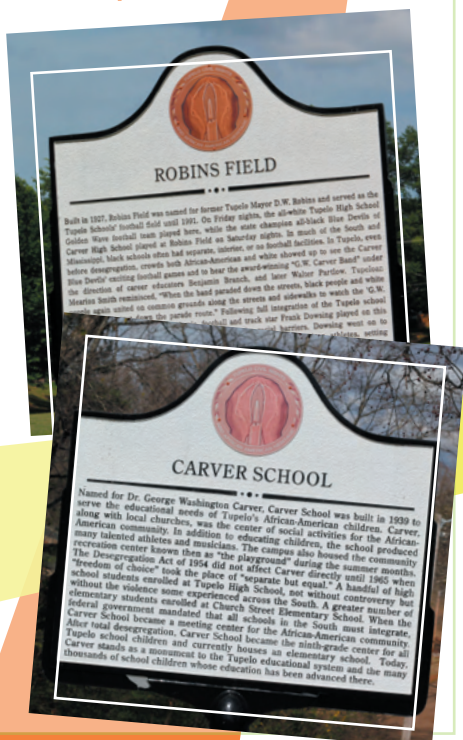
800 North Veterans Boulevard in Veterans Park  
662-841-6440  
Free admission

Located at Veterans Park just one mile south of I-22, Exit 87, the Vietnam Veterans Memorial is a permanent 300' black granite replica of the wall in Washington, D.C. It is inscribed with the names of 58,267 KIA's and MIA's of the Vietnam War.

## Heritage Trail Enrichment Program

The Heritage Trails Enrichment Program preserves Tupelo's rich history and tells the city's story through the interpretation of major sites on a Chickasaw Native American Trail, Civil War Trail, and Civil Rights & African American Heritage Trail. Each distinct trail explores specific people, places, and events that shaped Tupelo's story during that time. The trails preserve and interpret the remarkable things that have shaped what make this city what it is today.

Trail maps can be found at  
[www.tupelo.net](http://www.tupelo.net).







### **Tupelo Buffalo Park and Zoo**

2272 North Coley Road  
866-272-BISON (4766)  
tupelobuffalopark.com

#### **Admission**

What started out as a few buffalo on a cattle farm has quickly transformed into a herd of buffalo and over 300 exotic animals on a 200-acre park setting. More than 100,000 people come through the attraction each year to ride the monster bison bus, pet the farm animals, and revel in the height of the giraffe. Among the attractions are replicas of Chickasaw structures, a live pony carousel, party pavilions, trail rides, and reptile and bird exhibits.

### **Natchez Trace Parkway**

2680 Natchez Trace Parkway  
800-305-7417  
nps.gov/natr

#### **Free admission**

A 444-mile national scenic byway that runs from Natchez, Mississippi, to Nashville, Tennessee, the Natchez Trace Parkway began as a footpath for Native Americans 8,000 years ago. Offering a scenic, leisurely journey for motorists, cyclists, and hikers year-round, the Natchez Trace Parkway is a byway into the past. Parkway headquarters are located in Tupelo, and the Visitor Center offers a variety of exhibits, displays, and an orientation program. Information can also be found at [scenictrace.com](http://scenictrace.com).





## ATTRACTIONS



### Mississippi's Final Stands Civil War Center

607 Grisham Street, Baldwin  
(just north of Tupelo)

662-365-3969

[finalstands.com](http://finalstands.com)

#### Admission

A 2,500 square-foot interpretive center laying out the history of the Battle of Tupelo/Harrisburg and the Battle of Brice's Crossroads is located near a 1,200-acre battleground where the Battle of Brice's Crossroads was fought. The Interpretive Center is a great place to begin to explore the last two stands made by soldiers in Mississippi during the Civil War. From the center, you can visit many sites interpreted throughout the region that lay out the two battles including battlefields, cemeteries, and trails.

### Oren Dunn City Museum/Tupelo Veterans Museum

689 Rutherford Road

662-841-6438

[orendunnmuseum.org](http://orendunnmuseum.org)

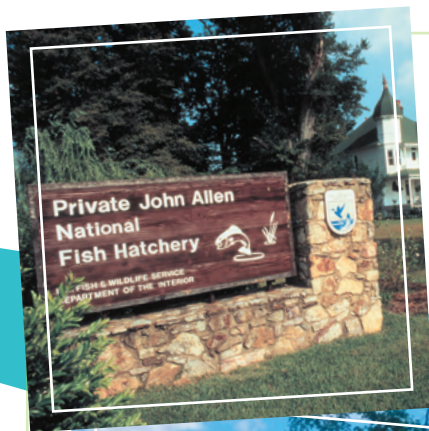
#### Admission

In the telling of Tupelo's history, the Oren Dunn Museum captures the essence of the American story in rural America. From a vintage village, including an original dogtrot cabin to year-round educational programming, visitors at the museum are invited to relive the history of a community named the "First All-America City."

Tupelo Veterans Museum, housed inside the city museum, displays a private collection compiled to remember the wars fought by Americans. Chronologically, the museum's treasures begin with the Civil War and feature a document signed by Abraham Lincoln, a pistol, a soldier's diary, and items soldiers carried in their pockets.







### **Pvt. John Allen National Fish Hatchery**

111 Elizabeth Street

662-842-1341

[fws.gov/southeast/private-john-allen](https://fws.gov/southeast/private-john-allen)

Free admission

Operated by the U.S. Fish and Wildlife Service, the hatchery spawns fish to stock rivers, lakes, and reservoirs for restoration and for the benefit of anglers.

### **Mississippi Hills Exhibit Center**

398 East Main Street

662-269-2580

[mississippihills.org](http://mississippihills.org)

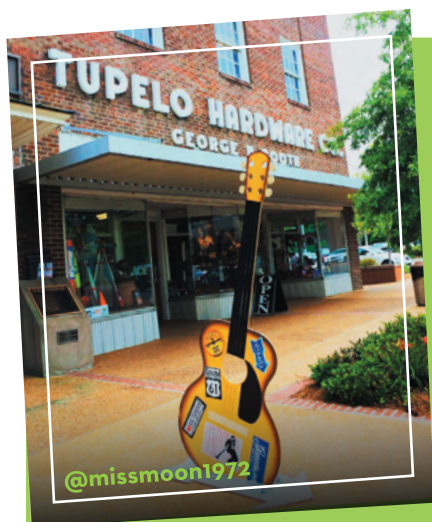
Free admission

The Mississippi Hills National Heritage Area covers a 30-county region affectionately known as the "Hill Country." Culture is heavily influenced by the intersection of the Appalachian Region and the Mississippi Delta, while the Hills has its own cultural persona evident throughout the region. The center displays little-known facts about Mississippi legends and offers an abundance of information on members throughout the region. It's your best stop to understand the Mississippi Hills National Heritage Area.





## ATTRACTIONS



### **Tupelo Hardware Company**

114 West Main Street

662-842-4637

tupelohardware.com

Free admission

Founded in 1925, by the same family that owns it today, Tupelo Hardware Company played a pivotal role in music history. In January 1945, Gladys and Elvis Presley entered Tupelo Hardware to look for Elvis a birthday present. The story goes that Elvis wanted a rifle, and being very protective of her young charge, Gladys refused. It is said that Elvis reacted quite loudly to the refusal, and a store employee and Presley family friend reached into a case and brought out a guitar and handed it to the boy, hoping to calm him down. Elvis loved the guitar and agreed to purchase it instead of the rifle.

### **Lyric Theatre**

200 North Broadway

662-844-1935

tct.ms

Admission

This historic theatre is one of the finest live theatre facilities in the South.



### **TCT Off Broadway**

213 East Franklin Street

662-844-1935

Tupelo Community Theatre's Off-Broadway venue is located just a few blocks from the organization's legendary Lyric Theatre and is a smaller, more intimate venue.



### **Link Centre**

1800 West Main Street  
662-690-4011

A multi-tenant, nonprofit facility which is home to organizations ranging from North Mississippi Symphony Orchestra to West of Shake Rag Improv Group, with three performance hall/rental venues and a commercial kitchen.



### **Queen's Reward Meadery**

1719 McCullough Boulevard  
662-823-6323

Mississippi's first meadery, is a small-batch meadery that produces a wide variety of meads from traditional dry and sweet to fruit-flavored meads including cranberry, pinot and lemonade. All the honey used in Queen's Reward meads is locally sourced.







## ATTRACTIONS



### **BancorpSouth Arena**

375 East Main Street

662-841-6528

[bcsarena.com](http://bcsarena.com)

#### Admission

This 10,000-seat venue plays host to everything from major music events like Elton John and Tim McGraw to public ice skating and meetings and trade shows.



### **GumTree Museum of Art**

211 West Main Street

662-844-2787

[gumtreemuseum.com](http://gumtreemuseum.com)

This facility is noted for its impressive revolving exhibits and production of the annual GumTree Arts Festival.





### Elvis Guitar Trail

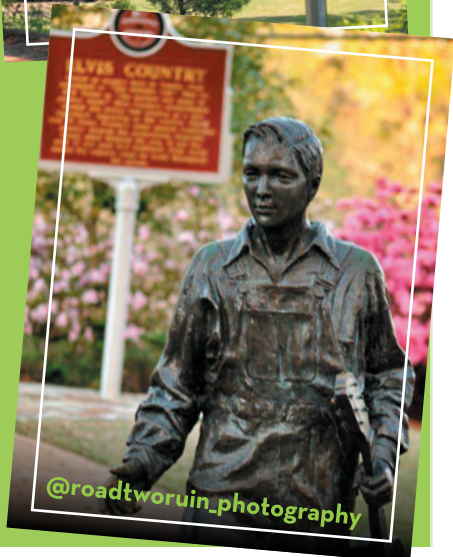
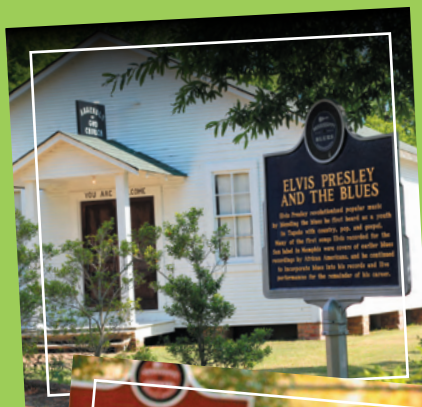
6 foot guitars - all Elvis-themed - have become a permanent part of Downtown Tupelo's cityscape.

They are the perfect photo op during your visit for sure!

For a full list of guitars, visit [tupelo.net](http://tupelo.net) and search **"The BEST of TUPELO."**

### Music Trails

The Mississippi Blues Trail marks a unique journey in the land that spawned the single most important root source of modern popular music. The Mississippi Country Music Trail marks the heritage of country music, a direct descendant of the Blues. Trail markers at Elvis Presley Birthplace and the Shake Rag community at the Tupelo Visitors Center recount Tupelo's heritage.





### ***Eat Well...***

In Tupelo, good food is as much a part of the experience as sitting on the front porch swing of Elvis Presley's birthplace. With over 160 restaurants, the city where anything is possible truly has something to satisfy every appetite. From lip-smacking barbecue and the traditional southern meat and three, to farm fresh creations and some of the best burgers around, Tupelo's culinary culture takes the power of possibility to another level. With new restaurants opening constantly, visit **EAT** at [tupelo.net](http://tupelo.net).



Follow **#tupelofoodie** on social media to plan your perfect meal in Tupelo.





## LODGING

**Coming Soon!** Tupelo's newest boutique hotel will open in December 2021. **Hotel Tupelo** will have 80-rooms, a local restaurant, and meeting space. Located in Downtown Tupelo's Fairpark, visitors can walk to local restaurants, shops, and attractions. Two new hotels will also open in Tupelo in 2021. **Home2Suites** and **Tru by Hilton** will open in North Tupelo.

### All America Inn

767 East Main St.  
662-844-5610

### America's Best Value Inn/Barnes Crossing

897 Harmony Lane  
662-205-4441  
americasbestvalueinn.com

### Baymont Inn & Suites

625 Spicer Drive  
662-844-7660  
Reservations: 1-877-229-6668  
baymontinntupelo@gmail.com  
baymontinns.com

### Best Western Plus Inn and Suites

3158 North Gloster St.  
662-847-0300  
Reservations: 1-800-780-7234  
bestwestern.com

### Candlewood Suites

979 North Gloster St.  
662-553-4649  
Reservations: 866-539-0036  
candlewoodsuites.com

### Clarion Inn

852 North Gloster St.  
662-844-4343  
choicehotels.com

### Comfort Inn

1532 McCullough Boulevard  
662-840-0340  
877-226-3539  
choicehotels.com

### Comfort Suites

1064 Carter Cove  
662-432-1550  
877-424-6423  
choicehotels.com

### Commodore Motel

1800 East Main St.  
662-842-9074

### Courtyard by Marriott

1320 North Gloster St.  
662-841-9960  
Reservations: 1-800-321-2211  
courtyard.com

### Days Inn

1015 North Gloster St.  
662-842-0088  
Reservations: 1-800-329-7466  
daysinn.com



## LODGING

### **Econo Lodge**

879 Mississippi Drive  
662-840-2380  
Reservations: 1-800-526-3766  
[econolodge.com](http://econolodge.com)

### **Economy Inn**

708 North Gloster St.  
662-842-1213

### **Fairfield Inn and Suites**

3070 Tom Watson Road  
662-680-6798

### **Hampton Inn and Suites**

116 Carter Cove  
662-821-0317  
Reservations: 1-800-426-7866

### **Hilton Garden Inn**

363 East Main St.  
662-718-5500  
[tupelo.stayhgi.com](http://tupelo.stayhgi.com)

### **Holiday Inn Express**

1612 McClure Cove  
662-620-8184  
Reservations: 1-800-465-4329  
[hiexpress.com/tupeloms](http://hiexpress.com/tupeloms)

### **Holiday Inn Hotel & Suites**

923 North Gloster St.  
662-269-0096  
Reservations: 1-800-465-4329

### **LaQuinta Inn & Suites**

1013 North Gloster St.  
662-847-8000  
Reservations: 1-800-753-3757  
[lq.com](http://lq.com)

### **Motel 6**

1500 McCullough Boulevard  
662-844-1904  
Reservations: 1-800-466-8356  
[motel6.com](http://motel6.com)

### **Quality Inn**

1190 North Gloster St.  
662-842-5100  
Reservations: 1-800-228-5150  
[comfortinn.com/hotel/ms408](http://comfortinn.com/hotel/ms408)

### **Red Roof Inn**

1516 McCullough Boulevard  
662-840-8300  
[redroof.com](http://redroof.com)

### **Rodeway Inn**

852 North Gloster St.  
662-844-4464  
[choicehotels.com](http://choicehotels.com)

### **Scottish Inn**

401 North Gloster St.  
662-842-1961  
Reservations: 1-800-251-1962

### **Super 8 Motel**

3898 McCullough Boulevard  
662-842-0448  
[super8.com](http://super8.com)

### **Travelers Motel**

915 North Gloster St.  
662-844-2221

### **Wingate by Wyndham**

186 Stone Creek Boulevard  
662-680-8887  
Reservations: 1-800-337-0077  
[tupelowingateinn.com](http://tupelowingateinn.com)

# RECREATION GUIDE

Enjoy the great outdoors by visiting one of Tupelo's area golf courses, lakes, campgrounds, and trails.



## Golf Courses

### Bel Air Golf Course (9 holes)

2107 Country Club Road, Tupelo | 662-841-6446

### Tupelo National Golf Club (18 holes)

3481 Big Oaks Boulevard, Saltillo | 662-844-8002

### Natchez Trace Golf Course (18 holes)

978 County Road 681, Saltillo | 662-869-2166

### Pontotoc Country Club

Highway 6 East, Pontotoc | 662-489-1962

## Campgrounds

### Tombigbee State Park

264 Cabin Drive, Tupelo | 662-842-7669

### Elvis Presley Lake & Campground

272 Road 995, Tupelo | 662-620-6314

### Trace State Park

2139 Faulkner Road, Belden | 662-489-2958

### The Campground at Barnes Crossing

125 Campground Road, Tupelo | 662-844-6063



## Trails

### Music Bend Nature Trail

99 North Veterans Blvd., Tupelo | 662-841-6440

### Tupelo Cross Country Trail at Ballard Park

(1 mile) | 662-841-6440

### Blackland Prairie Section of Natchez Trace National Scenic Trail (6 miles)

Access at mile marker 266 across from the Visitors Center and at Old Town Overlook.  
Map available at [nps.gov/natt](https://www.nps.gov/natt).





## GENERAL INFO



### Airline Service

Airline service in Tupelo is provided through Tupelo Regional Airport. For more information on flight providers and schedule, visit [flytupelo.com](http://flytupelo.com), or call the airport at 662-841-6570.



### Car Rentals

#### Budget Car Rentals at Tupelo Regional Airport

1-800-527-0700/662-840-3710

#### Hertz Car Rentals at Tupelo Regional Airport

662-680-9482

#### Enterprise Rent-A-Car

551 Daybrite Drive

1-800-RENT-A-CAR/662-842-2237

Thompson Square Shopping Center

890 Barnes Crossing Road, Suite 1

662-840-9314

#### U-Save

1973 Cliff Gookin Boulevard

662-840-8888



### Taxi Services include:

**A1 Cab** 662-691-8294

**City Cab** 662-871-3500

**Metro Cab** 662-523-3800

**Tupelo Cab Co.** 662-872-1133

**Yellow Cab** 662-840-4300



### Bus Service

Bus service is provided by Greyhound located at 2831 S. Eason Boulevard, 662-842-4557.



### Climate

The climate of Tupelo is mild with average summer highs of 92 degrees and lows of 68 degrees. Average winter temperatures range from highs of 54 degrees to lows of 32 degrees.



### In Case of Emergency

North Mississippi Medical Center is located at 830 South Gloster Street. Seek emergency medical service by calling the emergency room at 662-377-4157 or an ambulance service by calling 662-377-4159 or by dialing 911.

## ***Tupelo...Where More Positive Tomorrows Are Made!***

Tupelo is the kind of place where positivity leads. And, with positivity, there is always possibility. It has changed the world, it has shaped who we are, and it is what's making a better, safer tomorrow for us all.

We look forward to welcoming visitors to Tupelo and to Mississippi to enjoy the scenic outdoors and numerous tourism offerings. Guests are advised to follow Centers for Disease Control and Prevention (CDC) guidelines while both traveling to and visiting our beautiful state.

### **Safe practices include:**

- Washing hands regularly with soap and water
- Minimizing close contact with others
- Maintaining a minimum of six feet of social distance from others
- Wearing masks

Visitors are also encouraged to stay informed of additional public health guidance in local destinations throughout the state to minimize risk to themselves and others.

We will do our part to ensure all visitors can experience the joy of traveling to Tupelo, Mississippi. We thank you for doing yours.

**#VisitMSResponsibly • #MyTupelo**

**[www.tupelo.net/resources](http://www.tupelo.net/resources)**



The health and safety of visitors is our top priority.  
Visit [tupelo.net/resources/](https://tupelo.net/resources/) to stay up-to-date on how  
you can safely explore Tupelo.

**#VisitMSResponsibly • #MyTupelo**



**399 East Main Street**  
662.841.6521