



ONE LITTLE THING CAN CHANGE EVERYTHING

see what's next ...

In TUPELO, MISSISSIPPI
Where tomorrows are made!
VISITORS GUIDE





From electricity to Elvis Presley, Tupelo has always been at the forefront of progressive thinking. The city has renewed itself many times, but one thing has remained true always ... Tupelo is an upbeat, happy city where people believe they can accomplish anything. **#VisitMSResponsibly**

2 // VISITORS CENTER

3 // ELVIS EXPERIENCE

6 // LIVE MUSIC

7 // ATTRACTIONS

16 // RESTAURANTS

17 // LODGING

19 // RECREATION GUIDE

20 // GENERAL INFO

5 // SHOPPING



WHERE TO REST YOUR HEAD IN TUPELO Looking for a great night's sleep? Tupelo has you covered. With over 2,200 hotel rooms, Tupelo has the perfect place to lay your head. Tupelo's newest options include **Hotel Tupelo**, the city's newest boutique property located in the heart of Downtown Tupelo, **Tru by Hilton** and **Home2 Suites** opened in early 2022 near the Barnes Crossing Shopping District.

WHERE TO SAVOR THE FLAVOR IN TUPELO An emerging culinary destination in the South, Tupelo's foodie scene is nothing short of spectacular. The city is home to more than 160 restaurants, with new eateries opening constantly. Among the newest culinary hotspots is **Jobos**, located inside Hotel Tupelo. A line forms every day at **O' Lucky B's Famous Nachos** and **Tupelo Golden Spudz Bar & Grill** serves some of the best burgers, loaded fries, and specialty spuds around. **Chipotle Mexican Grill** is the newest restaurant in the Barnes Crossing Shopping District.

WHAT'S COMING New things are popping up all over the place in the city where anything is possible. Tupelo will welcome **Ethel Mae's**, **Mod Burger**, **Raising Cane's Chicken Fingers**, **Marco's Pizza**, **Just Love Café**, **Slim Chickens**, and **Asian Foods Market & Restaurant** in 2022. The **TownPlace Suites** by Marriott will also break ground near the Barnes Crossing Shopping District in 2022. Visit tupelo.net to stay up-to-date on all of the newest happenings in town.

Like, Follow, and Share MyTupelo on social media!





The Tupelo Visitors Center

is the perfect starting point for any trip to the city where anything is possible. From interactive exhibits that highlight the city's top attractions and a collective timeline of Tupelo's rich history, to displays focused on Elvis' childhood in Tupelo as told like never before, the Tupelo Visitors Center will fully prepare visitors for exploring this unique, southern town.



Exhibits

These exhibits are all located on the grounds of the Elvis Presley Birthplace and are viewable without charge:

- Walk of Life
- "Elvis at 13" statue
- "Becoming" statue
- "Elvis' Early Years" film
- Mississippi Blues Trail Marker
- Mississippi Country Music Trail Marker
- Mississippi Historic Landmark Marker
- Elvis Presley Memorial Chapel
- Story Wall
- Fountain of Life
- "Memphis Bound" car exhibit
- Gift Shop
- "Reflections" pond



These top-notch interpretive exhibits located on the grounds of the birthplace are well worth the small price of admission:

- Birthplace House Tour
- Elvis' Childhood Church
- Elvis Presley Museum



Tupelo, Mississippi

Elvis' Tupelo Driving Tour

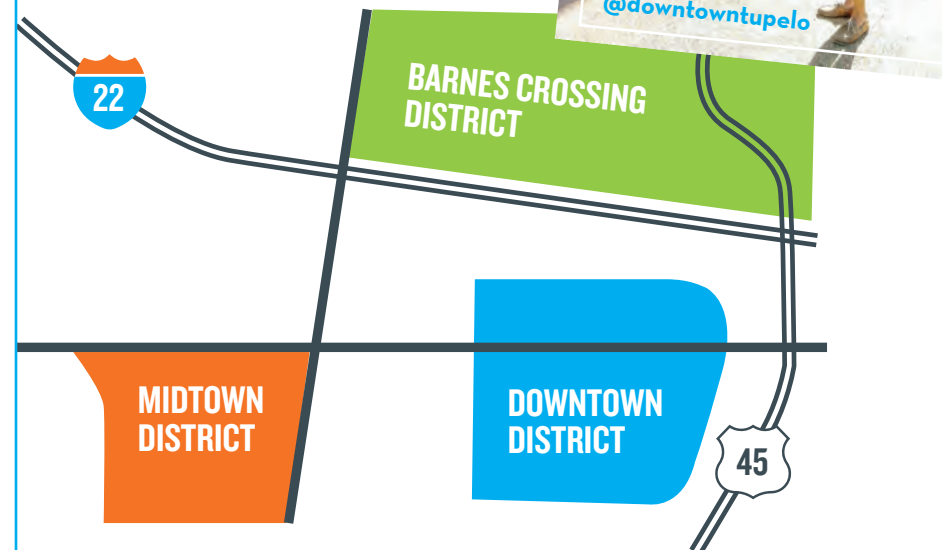
Featuring 14 significant places he frequented in his youth...



1. Tupelo Visitors Center & Previous Site of Shakerag
2. Previous Site of Tupelo Fairgrounds
3. The Elvis Homecoming Statue
4. Tupelo Hardware Store
5. Lee County Courthouse
6. Lyric Theatre
7. Lee County Library
8. Milam Junior High
9. Previous Site of Mayhorn's Grocery Store
10. Johnnie's Drive-In
11. Lawhon Elementary School
12. Mud Creek Swimming Hole
13. Previous Site of Assembly of God Church
-  14. Elvis Presley Birthplace & Museum



Tupelo is proud to offer a shopper's paradise with a diverse collection of one-of-a-kind shops including pottery, antiques, unique bookstores, boutiques, and a regional mall. Three of our most distinct shopping areas are historic Downtown Tupelo, Midtown District, and the Barnes Crossing District. The shopping is great all over, so hit all the nooks and crannies, and you are sure to find a shop you love.





It's a no-brainer to seek out music while in the birthplace of Elvis! Ask a local — we all keep our ear to the ground for the beat of the drum — or visit **tupelo.net** and the events calendar for up-to-date live music listings. Below is a quick guide of live music venues to get you started:



Amsterdam Deli & Grill

128 Main St.
@amsterdamdeli

Blue Canoe

2006 N. Gloster St.
bluecanoebars.com
@Bluecanoetupelo

Brick and Spoon

1201 N. Gloster St.
@BrickAndSpoonTupelo

Change

5339 Cliff Gookin Blvd.
@changetupelo

Downunder

2006 N. Gloster St.
downundertupelo.com
@downundertupelo

Holland's Bar and Grill

5952 N. Gloster St.
@hollandsgills

Lone Star Schooner Bar and Grill

3952 N. Gloster St., Ste. F

Lost + Found Coffee Co.

910 Robert E. Lee Dr. Ext.
@lostandfoundcoffeeco

Nautical Whimsey

210 Main St.
@Nauticalwhimseyofficial

Romie's Grocery

804 W. Jackson St.
romies.net
@romiesgrocery

Steele's Dive

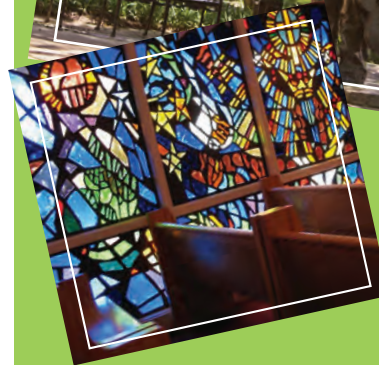
4187 Main St.
steelesdive.net
@steelesdive

The Stables

206 N. Spring St.
@stables.tupelo

Woody's

619 Gloster St.
woodysteak.com



Elvis Presley Birthplace and Museum

306 Elvis Presley Drive
662-841-1245
elvispresleybirthplace.com

Admission to some exhibits, others free

See page 3 for detailed information

Tupelo Visitors Center

399 East Main Street
662-841-6521
tupelo.net

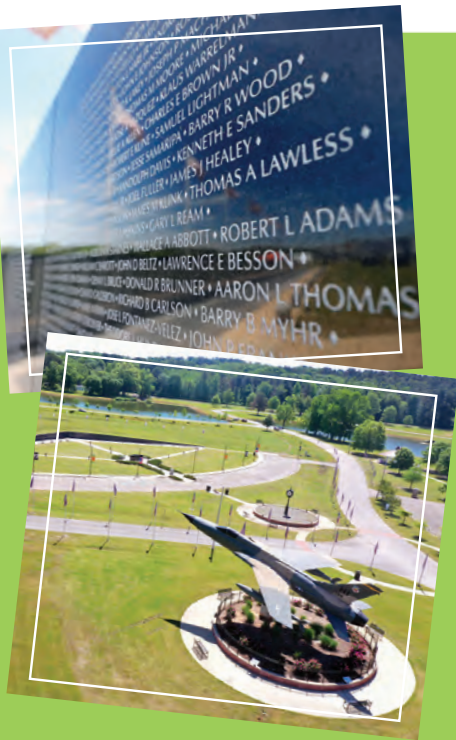
Free admission

See page 2 for detailed information





ATTRACTIONS



Vietnam Veterans Replica Wall Memorial

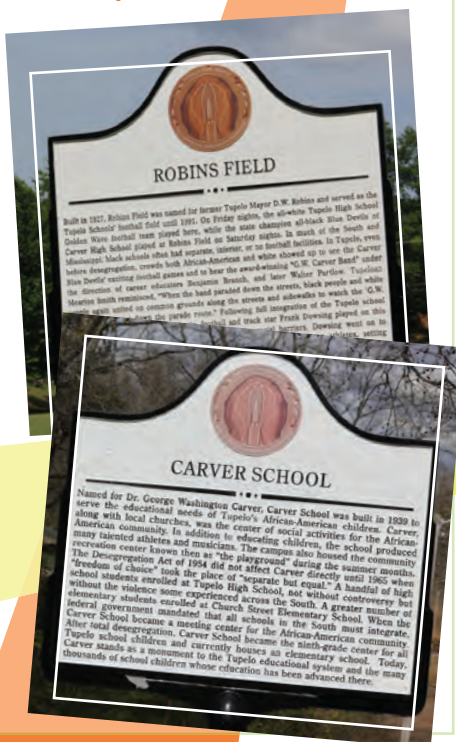
800 North Veterans Boulevard in Veterans Park
662-841-6440
Free admission

Located at Veterans Park just one mile south of I-22, Exit 87, the Vietnam Veterans Memorial is a permanent 300' black granite replica of the wall in Washington, D.C. It is inscribed with the names of 58,267 KIA's and MIA's of the Vietnam War.

Heritage Trail Enrichment Program

The Heritage Trails Enrichment Program preserves Tupelo's rich history and tells the city's story through the interpretation of major sites on a Chickasaw Native American Trail, Civil War Trail, and Civil Rights & African American Heritage Trail. Each distinct trail explores specific people, places, and events that shaped Tupelo's story during that time. The trails preserve and interpret the remarkable things that have shaped what make this city what it is today.

Trail maps can be found at
www.tupelo.net.



Tupelo Buffalo Park and Zoo

2272 North Coley Road
866-272-BISON (4766)
tupelobuffalopark.com

Admission

What started out as a few buffalo on a cattle farm has quickly transformed into a herd of buffalo and over 300 exotic animals on a 200-acre park setting. More than 100,000 people come through the attraction each year to ride the monster bison bus, pet the farm animals, and revel in the height of the giraffe. Among the attractions are replicas of Chickasaw structures, a live pony carousel, party pavilions, trail rides, and reptile and bird exhibits.

Natchez Trace Parkway

2680 Natchez Trace Parkway
800-305-7417
nps.gov/natr
www.scenictrace.com

Free admission

A 444-mile national scenic byway that runs from Natchez, Mississippi, to Nashville, Tennessee, the Natchez Trace Parkway began as a footpath for Native Americans 8,000 years ago. Offering a scenic, leisurely journey for motorists, cyclists, and hikers year-round, the Natchez Trace Parkway is a byway into the past. Parkway headquarters are located in Tupelo, and the Visitor Center offers a variety of exhibits, displays, and an orientation program. Information can also be found at www.scenictrace.com.





Mississippi's Final Stands Civil War Center

607 Grisham Street, Baldwin
(just north of Tupelo)

662-365-3969
finalstands.com

Admission

A 2,500 square-foot interpretive center laying out the history of the Battle of Tupelo/Harrisburg and the Battle of Brice's Crossroads is located near a 1,200-acre battleground where the Battle of Brice's Crossroads was fought. The Interpretive Center is a great place to begin to explore the last two stands made by soldiers in Mississippi during the Civil War. From the center, you can visit many sites interpreted throughout the region that lay out the two battles including battlefields, cemeteries, and trails.

Oren Dunn City Museum/Tupelo Veterans Museum

689 Rutherford Road
662-841-6438
orendunnmuseum.com

Admission

In the telling of Tupelo's history, the Oren Dunn City Museum captures the essence of the American story in rural America. From a vintage village, including an original dogtrot cabin, to year-round educational programming, visitors at the museum are invited to re-live the history of a community named the "First All-America City."

Tupelo Veterans Museum, housed inside the city museum, displays a private collection compiled to remember the wars fought by Americans. Chronologically, the museum's treasures begin with the Civil War and feature a document signed by Abraham Lincoln, a pistol, a soldier's diary, and items soldiers carried in their pockets.



Pvt. John Allen National Fish Hatchery

111 Elizabeth Street
662-842-1341
fws.gov/southeast/private-john-allen

Free admission

Operated by the U.S. Fish and Wildlife Service, the hatchery spawns fish to stock rivers, lakes, and reservoirs for restoration and for the benefit of anglers.

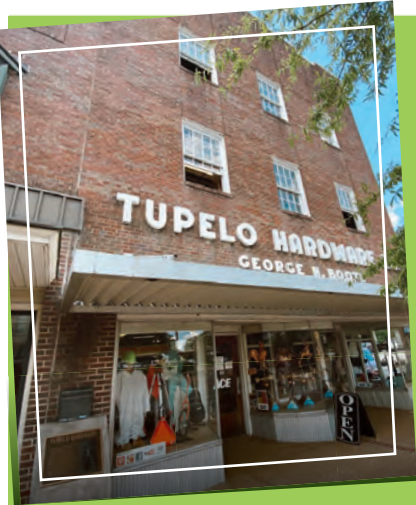
Mississippi Hills Exhibit Center

398 East Main Street
662-269-2580
mississippihills.org

Free admission

The Mississippi Hills National Heritage Area covers a 30-county region affectionately known as the "Hill Country." Culture is heavily influenced by the intersection of the Appalachian Region and the Mississippi Delta, while the Hills has its own cultural persona evident throughout the region. The center displays little-known facts about Mississippi legends and offers an abundance of information on members throughout the region. It's your best stop to understand the Mississippi Hills National Heritage Area.





Tupelo Hardware Company

114 West Main Street
662-842-4637
tupelohardware.com

Free admission

Founded in 1925, by the same family that owns it today, Tupelo Hardware Company played a pivotal role in music history. In January 1945, Gladys and Elvis Presley entered Tupelo Hardware to look for Elvis a birthday present. The story goes that Elvis wanted a rifle, and being very protective of her young charge, Gladys refused. It is said that Elvis reacted quite loudly to the refusal, and a store employee and Presley family friend reached into a case and brought out a guitar and handed it to the boy, hoping to calm him down. Elvis loved the guitar and agreed to purchase it instead of the rifle.

Lyric Theatre

200 North Broadway
662-844-1935
tctwebstage.com/wordpress/

Admission

This historic theatre is one of the finest live theatre facilities in the South.



TCT Off Broadway

213 East Franklin Street
662-844-1935
tctwebstage.com/wordpress/

Tupelo Community Theatre's Off-Broadway venue is located just a few blocks from the organization's legendary Lyric Theatre and is a smaller, more intimate venue.



Queen's Reward Meadery

1719 McCullough Boulevard
662-823-6323
queensreward.com

Mississippi's first and only meadery is a small-batch meadery that produces a wide variety of meads from traditional dry and sweet to fruit-flavored meads including cranberry and lemonade. All the honey used in Queen's Reward's meads is locally sourced.

Link Centre

1800 West Main Street
662-690-4011
link-centre.org

A multi-tenant, nonprofit facility which is home to organizations ranging from North Mississippi Symphony Orchestra to West of Shake Rag Improv Group, with three performance hall/rental venues and a commercial kitchen.





BancorpSouth Arena

375 East Main Street
662-841-6528
bcsarena.com

Admission

This 10,000-seat venue plays host to everything from major music events like Elton John and Tim McGraw to meetings and trade shows.



GumTree Museum of Art

211 West Main Street
662-844-2787
gumtreemuseum.com

This facility is noted for its impressive revolving exhibits and production of the annual Gumtree Art & Wine Festival.



Elvis Guitar Trail

More than 25, six foot guitars - all Elvis-themed - have become a permanent part of Downtown Tupelo's cityscape making the perfect photo op during your visit.

For a full list of guitars, visit tupelo.net.

Music Trails

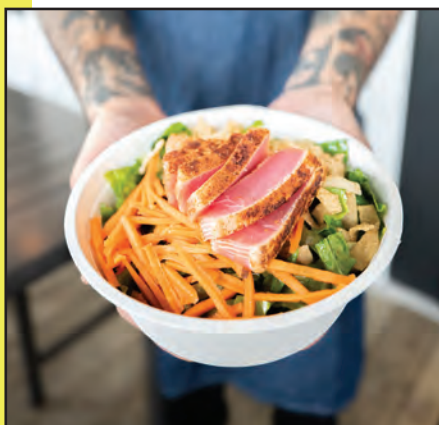
The Mississippi Blues Trail marks a unique journey in the land that spawned the single most important root source of modern popular music. The Mississippi Country Music Trail marks the heritage of country music, a direct descendant of the Blues. Trail markers at the Elvis Presley Birthplace and the Shake Rag community at the Tupelo Visitors Center recount Tupelo's heritage.



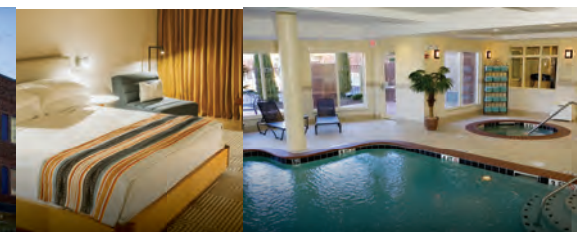
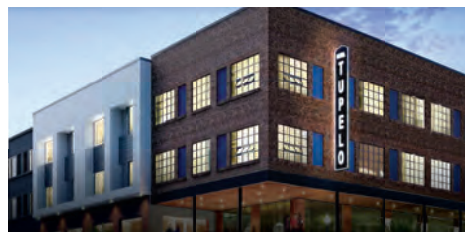


Eat Well...

Tupelo's culinary scene is as much a part of the experience as visiting the city's many unique attractions. From lip-smacking barbeque and crispy, fried chicken to farm fresh creations and traditional southern meat-and-three, Tupelo's restaurants can satisfy even the pickiest of palates.



Visit www.tupelo.net/about-tupelo/ to request a Restaurant Guide. Follow and tag **#tupelofoodie** on social media.



LODGING

America's Best Value Inn

4701 Leeb Drive
662-269-6220
americasbestvalueinn.com

America's Best Value Inn/Barnes Crossing

897 Harmony Lane
662-205-4441

Baymont Inn

625 Spicer Drive
662-844-7660
Reservations: 1-877-229-6668
baymontinntupelo@gmail.com
baymontinns.com

Best Western Plus Inn and Suites

3158 North Gloster St.
662-847-0300
Reservations: 1-800-780-7234
bestwestern.com

Candlewood Suites

979 North Gloster St.
662-553-4649
Reservations: 866-539-0036
candlewoodsuites.com

Clarion Inn

852 North Gloster St.
662-844-4343
choicehotels.com

Comfort Inn

1532 McCullough Boulevard
662-840-0340 | 877-226-3539
choicehotels.com

Comfort Suites

1064 Carter Cove
662-432-1550 | 877-424-6423
choicehotels.com

Commodore Motel

1800 East Main St.
662-842-9074

Courtyard by Marriott

1320 North Gloster St.
662-841-9960
Reservations: 1-800-321-2211
courtyard.com

Days Inn

1015 North Gloster St.
662-842-0088
Reservations: 1-800-329-7466
daysinn.com

Econolodge

879 Mississippi Drive
662-840-2380
econolodge.com

Economy Inn

708 North Gloster St.
662-842-1213



Fairfield Inn and Suites

3070 Tom Watson Road
662-680-6798

Hampton Inn and Suites

1116 Carter Cove
662-821-0317
Reservations: 1-800-426-7866

Hilton Garden Inn

363 East Main Street
662-718-5500
tupelo.stayhgi.com

Holiday Inn Express

1612 McClure Cove
662-620-8184
Reservations: 1-800-465-4329
hiexpress.com/tupeloms

Holiday Inn & Suites

923 North Gloster Street
662-269-0096
Reservations: 1-800-465-4329

Home2 Suites by Hilton

1005 Landmark Blvd.
662-350-6256

Hotel Tupelo

314 East Main Street
662-362-6200

LaQuinta Inn & Suites

1013 North Gloster Street
662-847-8000
Reservations: 1-800-753-3757
lq.com

Motel 6

767 East Main Street
662-844-5610
motel6.com

Quality Inn

1190 North Gloster Street
662-842-5100
Reservations: 1-800-228-5150
comfortinn.com/hotel/ms408

Red Roof Inn

1516 McCullough Boulevard
662-840-8300
redroof.com

Scottish Inn

401 North Gloster Street
662-842-1961
Reservations: 1-800-251-1962

Super 7

1500 McCullough Boulevard
662-844-1904
Reservations: 1-800-466-8356

Super 8 Motel

3898 McCullough Boulevard
662-842-0448
super8.com

Surestay Hotel by Best Western

832 A North Gloster | 662-346-4156
Reservations: 1-800-780-7234
bestwestern.com

Travelers Motel

915 North Gloster Street
662-844-2221

Tru by Hilton

1003 Landmark Boulevard
662-350-6258

Wingate by Wyndham

186 Stone Creek Boulevard | 662-680-8887
Reservations: 1-800-337-0077
tupelowingateinn.com

Enjoy the great outdoors by visiting Tupelo's area golf courses, lakes, campgrounds, and trails.



Golf Courses

Bel Air Golf Course (9 holes)

2107 Country Club Road, Tupelo | 662-841-6446

Tupelo National Golf Club (18 holes)

3481 Big Oaks Boulevard, Saltillo | 662-844-8002

Natchez Trace Golf Course (18 holes)

978 County Road 681, Saltillo | 662-869-2166

Pontotoc Country Club

Highway 6 East, Pontotoc | 662-489-1962

Campgrounds

Tombigbee State Park

264 Cabin Drive, Tupelo | 662-842-7669

Elvis Presley Lake & Campground

272 Road 995, Tupelo | 662-620-6314

Trace State Park

2139 Faulkner Road, Belden | 662-489-2958

The Campground at Barnes Crossing

125 Campground Road, Tupelo | 662-844-6063



Trails

Music Bend Nature Trail

99 North Veterans Blvd., Tupelo | 662-841-6440

Tupelo Cross Country Trail at Ballard Park (1 mile) | 662-841-6440

Blackland Prairie Section of Natchez Trace National Scenic Trail (6 miles)

Access at mile marker 266 across from the Visitor Center and at Old Town Overlook.
Map available at nps.gov/natt.



GENERAL INFO



Airline Service

Airline service in Tupelo is provided through Tupelo Regional Airport. For more information on flight providers and schedule, visit flytupelo.com or call the airport at 662-841-6570.



Car Rentals

Budget Car Rentals at Tupelo Regional Airport

1-800-527-0700/662-840-3710

Hertz Car Rentals at Tupelo Regional Airport

662-680-9482

Enterprise Rent-A-Car

551 Daybrite Drive
1-800-RENT-A-CAR/662-842-2237

Thompson Square Shopping Center
890 Barnes Crossing Road, Suite 1
662-840-9314

U-Save

1973 Cliff Gookin Boulevard
662-840-8888



Taxi Services include:

A1 Cab 662-691-8294

City Cab 662-871-3500

Metro Cab 662-523-3800

Tupelo Cab Co. 662-872-1133

Yellow Cab 662-840-4300



Bus Service

Bus service is provided by Greyhound located at 2831 S. Eason Boulevard, 662-842-4557.



Climate

The climate of Tupelo is mild with average summer highs of 92 degrees and lows of 68 degrees. Average winter temperatures range from highs of 54 degrees to lows of 32 degrees.



In Case of Emergency

North Mississippi Medical Center is located at 830 South Gloster Street. Seek emergency medical service by calling the emergency room at 662-377-4157 or an ambulance service by calling 662-377-4159 or by dialing 911.

JOIN US at Tupelo's Festivals and Special Events



World of Customs Auto Show



Gumtree Art & Wine Festival



Dancing with the King



Tupelo Blue Suede Cruise



Tupelo Elvis Festival

Tupelo is the kind of place where positivity leads. And, with positivity, there is always possibility. It has changed the world, it has shaped who we are, and it is what's making a better, safer tomorrow for us all.

#VisitMSResponsibly • #MyTupelo



Imagine what you can do here!

#VisitMSResponsibly • #MyTupelo



399 East Main Street

662.841.6521