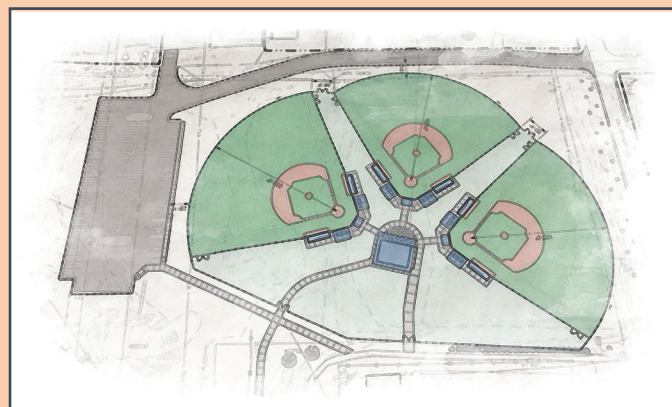




Ballard Park Baseball Sportsplex

- 4 fields with a 200 ft. fence
- 2 fields with a 225 ft. fence
- 2 fields with a 250 ft. fence
- 1 field with a 275 ft. fence
- Other off site baseball fields (5) for large events
- Two commons areas used to get away from the heat
- Covered bleachers for spectators
- Covered scorekeeper seating
- Umpire facility located onsite for rest and recovery

NEW ADDITION! BankPlus Field



All three turf fields are 195ft.
BankPlus Field • BankPlus Field 2
BankPlus Field 3

Concession on site called the BankPlus Grill



2009 - present
USSSA 12 Year Old State Championships

“
USSSA is proud to be partnered with
the City of Tupelo. The Parks
Department staff is one of the best
in the State of Mississippi and a plea-
sure to work with.

”
- Scotty Baker
Director of Tournament Operations
Snowden Grove Park



Getting to #MyTupelo

Tupelo is located in Northeast Mississippi and easily accessible by U.S. Highways 45, I-22, and the historic Natchez Trace Parkway.

HOURS/MILES FROM TUPELO:

	hours	miles
MEMPHIS	1.5	100
BIRMINGHAM	2	135
JACKSON	3	190
NASHVILLE	4	200
ATLANTA	4.5	280
NEW ORLEANS	5.5	340
ST. LOUIS	6	370
BILOXI	5	310
NATCHEZ	4.5	290
BRANSON	6.5	370



For more information, contact
Tupelo Convention & Visitors Bureau
662-841-6521
tupelo.net



Tupelo's HealthWorks! Kids' Museum is a hands-on, interactive museum aimed at educating our kids to live healthier lives. A total of 18 curriculum-based attractions are available for kids of all ages to enjoy and it is only the second center of its kind in the United States.

HealthWorks! Kids Museum

The Elvis Presley Birthplace and Museum is Tupelo's signature and most significant landmark. The humble two-room dwelling where Elvis Presley was born is the centerpiece of a 15 acre Elvis Presley Park that includes, among other exhibits and "Elvis at 13" statue and Elvis' childhood church.



Elvis Presley Birthplace, Museum and Chapel

Tupelo's culinary culture takes the power of possibility to another level with something to satisfy every appetite. From food trucks and dough burgers to farm-fresh creations and fine dining, **Imagine what you can eat here!** Whether you are looking for the perfect ladies' lunch spot, a great burger and live music, lip-smacking barbecue, or a truly memorable dining experience, Tupelo's over 160 restaurants are ready and willing to make your mouth water. Tupelo invites guests to discover the ultimate #TupeloFoodie experience by creating your own culinary itinerary at Tupelo. Throw in a little live music at one of the city's many live music venues and let the rhythms of the town that gave rise to the world's greatest entertainer move you. Great meals literally put the icing on the cake in Tupelo, where anything is possible.

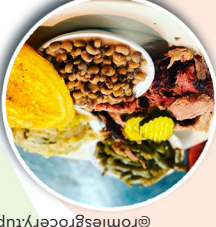
RESTAURANTS



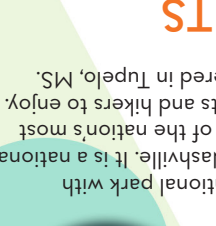
@cravetupelo



@jsa-productions



@romiesgroceryTupelo



@ayakaya30408



@perryvermeulen



@ayakaya30408

The Natchez Trace Parkway, a 444-mile national park with 10,000 years of history, links Natchez to Nashville. It is a national scenic byway, All-American Road and one of the nation's most unique national parks for motorists, cyclists and hikers to enjoy. The Natchez Trace Parkway is headquartered in Tupelo, MS.

Natchez Trace Parkway

Tupelo Buffalo Park & Zoo is a unique staple of the City of Tupelo. It is home to over 300 animals representing 87 different species. Feature attractions include the Monster Bison Bus Tour, an open air ride that tours the open grounds of roaming bison, camels, giraffes, yaks, longhorns, and zebras to name a few.

Tupelo Buffalo Park & Zoo

2272 North Coley Road
Tupelo, MS 38802
Phone: 662.844.8709
www.tupelobuffalopark.com

Tupelo Buffalo Park and Zoo | 2272 North Coley Road
662.844.8709
Home to more than 260 animals, you can also choose from a variety of rides and tours. Don't forget to visit the exhibits including the petting zoo and Chickasaw Indian Village. For admission prices, visit www.tupelobuffalopark.com. Open Monday-Saturday 9 a.m. to 4 p.m. and Sunday 11 a.m. to 4 p.m.

Splash Pads | Rob Leake City Park (1107 Joiner Street) | **Veterans Memorial Park** (80 North Veterans Memorial Boulevard)
Need to cool off and have some fun? Open seasonally during warmer weather, these splash pads and water features promise hours of fun for everyone!

Rebelenes Bowling Center | 625 Robert E. Lee Drive
662.842.1132
An entertainment staple in Tupelo for more than 50 years, Rebelenes includes 22 bowling lanes, a game room, billiards, and concessions. Visit www.rebelenesbowling.com for hours and prices.

The Mall at Barnes Crossing | 1001 Barnes Crossing Road
662.844.6255
This super regional shopping mall is home to more than 90 specialty shops, five anchor stores, an eight-screen Cinemark movie theater, and 600-seat food court. Open Monday-Saturday 10 a.m. to 9 p.m. and Sunday 12:30 to 6 p.m.

Fairpark District Downtown | East Main Street
In the heart of downtown Tupelo, Fairpark is home to green space, a children's playground, and splash fountain. Snap a photo with the 1956 Elvis Homecoming Statue or Chief Plomingo.

Event Zone Entertainment | 790 Moncreiff Drive | 662.344.6800
A little bit of everything is available at this family entertainment center that features bowling, laser tag, inflatable, bumper cars, arcade games, and concessions. Visit www.eventzone.net for hours and prices.

Cinemark Movies 8 | 1001 Barnes Crossing Road | 662.844.8256
Located at the Mall at Barnes Crossing, this eight-screen movie complex features luxury loungers with heated and reclining seats, extendable footrests, and cup holders for your favorite drink! Visit www.cinemark.com for tickets and show times.

Ballard Park | 2629 West Main Street
Located within walking distance of the sports complex, head over and enjoy the green space, walking trails, skate park, and playground equipment. You can even feed the ducks!

Best Western Plus Inn & Suites
3158 North Gloster Street
Phone: 662.842.0300
National Reservations: 1.800.780.7234

Baymont Inn & Suites
625 Spicer Drive
Phone: 662.205.4441
National Reservations: 1.800.237.8466
www.baymontinn.com

Americas Best Value Inn/ Barnes Crossing
897 Harmony Lane
Phone: 662.844.5610
National Reservations: 1.800.426.7866
<http://www.tupelobestvalueinn.com/>

La Quinta Inns & Suites
1013 North Gloster Street
Phone: 662.269.0096
National Reservations: 1.800.753.3757

Courtyard by Marriott
1320 North Gloster Street
Phone: 662.841.9960
National Reservations: 1.800.426.7866

Red Roof Inn
1516 McCullough Boulevard
Phone: 662.840.3000
National Reservations: 1.800.228.5150

Quality Inn
1190 North Gloster Street
Phone: 662.842.5100
National Reservations: 1.800.466.8356
www.qualityinn.com

Comfort Inn
1532 McCullough Blvd.
Phone: 662.844.4343
National Reservations: 1.800.466.8356
www.comfortinn.com

Metel 6
1500 McCullough Boulevard
Phone: 662.844.1904
National Reservations: 1.800.466.8356
www.metel6.com

Scotish Inn
401 North Gloster Street
Phone: 662.842.1961
National Reservations: 1.800.251.1962

Super 8 Motel
3898 McCullough Boulevard
Phone: 662.842.0448
National Reservations: 1.800.251.1962

Wingate by Wyndham
186 Stone Creek Boulevard
Phone: 662.680.8887
National Reservations: 1.800.228.1000
www.wingatetupelo.com

Fairfield Inn & Suites
3070 Tom Watson Road
Phone: 662.844.2221
National Reservations: 1.800.228.1000

Traveler's Motel
915 North Gloster Street
Phone: 662.844.2221
National Reservations: 1.800.228.1000

Economy Inn
708 North Gloster Street
Phone: 662.842.1213
National Reservations: 1.888.326.2427
www.marriott.com/tuphi

Ecotodge
879 Mississippi Drive
Phone: 662.842.0380
National Reservations: 1.800.526.3766
www.ecotodge.com

Days Inn
1015 North Gloster Street
Phone: 662.841.9960
National Reservations: 1.800.426.7866

Wingate by Wyndham
186 Stone Creek Boulevard
Phone: 662.680.8887
National Reservations: 1.800.228.1000
www.wingatetupelo.com

Red Roof Inn
1516 McCullough Boulevard
Phone: 662.840.3000
National Reservations: 1.800.228.5150

Quality Inn
1190 North Gloster Street
Phone: 662.842.5100
National Reservations: 1.800.466.8356
www.qualityinn.com

Comfort Inn
1532 McCullough Blvd.
Phone: 662.844.4343
National Reservations: 1.800.466.8356
www.comfortinn.com

Metel 6
1500 McCullough Boulevard
Phone: 662.844.1904
National Reservations: 1.800.466.8356
www.metel6.com

Scotish Inn
401 North Gloster Street
Phone: 662.842.1961
National Reservations: 1.800.251.1962

Super 8 Motel
3898 McCullough Boulevard
Phone: 662.842.0448
National Reservations: 1.800.251.1962

Wingate by Wyndham
186 Stone Creek Boulevard
Phone: 662.680.8887
National Reservations: 1.800.228.1000
www.wingatetupelo.com

Fairfield Inn & Suites
3070 Tom Watson Road
Phone: 662.844.2221
National Reservations: 1.800.228.1000

Traveler's Motel
915 North Gloster Street
Phone: 662.844.2221
National Reservations: 1.800.228.1000

Economy Inn
708 North Gloster Street
Phone: 662.842.1213
National Reservations: 1.888.326.2427
www.marriott.com/tuphi

Ecotodge
879 Mississippi Drive
Phone: 662.842.0380
National Reservations: 1.800.526.3766
www.ecotodge.com

Days Inn
1015 North Gloster Street
Phone: 662.841.9960
National Reservations: 1.800.426.7866

Wingate by Marriott
1320 North Gloster Street
Phone: 662.841.9960
National Reservations: 1.800.426.7866

Red Roof Inn
1516 McCullough Boulevard
Phone: 662.840.3000
National Reservations: 1.800.228.5150

Quality Inn
1190 North Gloster Street
Phone: 662.842.5100
National Reservations: 1.800.466.8356
www.qualityinn.com

Comfort Inn
1532 McCullough Blvd.
Phone: 662.844.4343
National Reservations: 1.800.466.8356
www.comfortinn.com

Metel 6
1500 McCullough Boulevard
Phone: 662.844.1904
National Reservations: 1.800.466.8356
www.metel6.com

Scotish Inn
401 North Gloster Street
Phone: 662.842.1961
National Reservations: 1.800.251.1962

Super 8 Motel
3898 McCullough Boulevard
Phone: 662.842.0448
National Reservations: 1.800.251.1962

Wingate by Wyndham
186 Stone Creek Boulevard
Phone: 662.680.8887
National Reservations: 1.800.228.1000
www.wingatetupelo.com

Fairfield Inn & Suites
3070 Tom Watson Road
Phone: 662.844.2221
National Reservations: 1.800.228.1000

Traveler's Motel
915 North Gloster Street
Phone: 662.844.2221
National Reservations: 1.800.228.1000

Economy Inn
708 North Gloster Street
Phone: 662.842.1213
National Reservations: 1.888.326.2427
www.marriott.com/tuphi

Ecotodge
879 Mississippi Drive
Phone: 662.842.0380
National Reservations: 1.800.526.3766
www.ecotodge.com

Days Inn
1015 North Gloster Street
Phone: 662.841.9960
National Reservations: 1.800.426.7866

Wingate by Marriott
1320 North Gloster Street
Phone: 662.841.9960
National Reservations: 1.800.426.7866

Red Roof Inn
1516 McCullough Boulevard
Phone: 662.840.3000
National Reservations: 1.800.228.5150

Quality Inn
1190 North Gloster Street
Phone: 662.842.5100
National Reservations: 1.800.466.8356
www.qualityinn.com

Comfort Inn
1532 McCullough Blvd.
Phone: 662.844.4343
National Reservations: 1.800.466.8356
www.comfortinn.com

Metel 6
1500 McCullough Boulevard
Phone: 662.844.1904
National Reservations: 1.800.466.8356
www.metel6.com

Scotish Inn
401 North Gloster Street
Phone: 662.842.1961
National Reservations: 1.800.251.1962

Super 8 Motel
3898 McCullough Boulevard
Phone: 662.842.0448
National Reservations: 1.800.251.1962

Wingate by Wyndham
186 Stone Creek Boulevard
Phone: 662.680.8887
National Reservations: 1.800.228.1000
www.wingatetupelo.com

Fairfield Inn & Suites
3070 Tom Watson Road
Phone: 662.844.2221
National Reservations: 1.800.228.1000

Traveler's Motel
915 North Gloster Street
Phone: 662.844.2221
National Reservations: 1.800.228.1000

Economy Inn
708 North Gloster Street
Phone: 662.842.1213
National Reservations: 1.888.326.2427
www.marriott.com/tuphi

Ecotodge
879 Mississippi Drive
Phone: 662.842.0380
National Reservations: 1.800.526.3766
www.ecotodge.com

Days Inn
1015 North Gloster Street
Phone: 662.841.9960
National Reservations: 1.800.426.7866

Wingate by Marriott
1320 North Gloster Street
Phone: 662.841.9960
National Reservations: 1.800.426.7866

Red Roof Inn
1516 McCullough Boulevard
Phone: 662.840.3000
National Reservations: 1.800.228.5150

Quality Inn
1190 North Gloster Street
Phone: 662.842.5100
National Reservations: 1.800.466.8356
www.qualityinn.com

Comfort Inn
1532 McCullough Blvd.
Phone: 662.844.4343
National Reservations: 1.800.466.8356
www.comfortinn.com

Metel 6
1500 McCullough Boulevard
Phone: 662.844.1904
National Reservations: 1.800.466.8356
www.metel6.com

Scotish Inn
401 North Gloster Street
Phone: 662.842.1961
National Reservations: 1.800.251.1962

Super 8 Motel
3898 McCullough Boulevard
Phone: 662.842.0448
National Reservations: 1.800.251.1962

Wingate by Wyndham
186 Stone Creek Boulevard
Phone: 662.680.8887
National Reservations: 1.800.228.1000
www.wingatetupelo.com

Fairfield Inn & Suites
3070 Tom Watson Road
Phone: 662.844.2221
National Reservations: 1.800.228.1000

Traveler's Motel
915 North Gloster Street
Phone: 662.844.2221
National Reservations: 1.800.228.1000

Economy Inn
708 North Gloster Street
Phone: 662.842.1213
National Reservations: 1.888.326.2427
www.marriott.com/tuphi

Ecotodge
879 Mississippi Drive
Phone: 662.842.0380
National Reservations: 1.800.526.3766
www.ecotodge.com

Days Inn
1015 North Gloster Street
Phone: 662.841.9960
National Reservations: 1.800.426.7866

Wingate by Marriott
1320 North Gloster Street
Phone: 662.841.9960
National Reservations: 1.800.426.7866

Red Roof Inn
1516 McCullough Boulevard
Phone: 662.840.3000
National Reservations: 1.800.228.5150

Quality Inn
1190 North Gloster Street
Phone: 662.842.5100
National Reservations: 1.800.466.8356
www.qualityinn.com

Comfort Inn
1532 McCullough Blvd.
Phone: 662.844.4343
National Reservations: 1.800.466.8356
www.comfortinn.com

Metel 6
1500 McCullough Boulevard
Phone: 662.844.1904
National Reservations: 1.800.466.8356
www.metel6.com

Scotish Inn
401 North Gloster Street
Phone: 662.842.1961
National Reservations: 1.800.251.1962

Super 8 Motel
3898 McCullough Boulevard
Phone: 662.842.0448
National Reservations: 1.800.251.1962

Wingate by Wyndham
186 Stone Creek Boulevard
Phone: 662.680.8887
National Reservations: 1.800.228.1000
www.wingatetupelo.com

Fairfield Inn & Suites
3070 Tom Watson Road
Phone: 662.844.2221
National Reservations: 1.800.228.1000

Traveler's Motel
915 North Gloster Street
Phone: 662.844.2221
National Reservations: 1.800.228.1000

Economy Inn
708 North Gloster Street
Phone: 662.842.1213
National Reservations: 1.888.326.2427
www.marriott.com/tuphi

Ecotodge
879 Mississippi Drive
Phone: 662.842.0380
National Reservations: 1.800.526.3766
www.ecotodge.com

Days Inn
1015 North Gloster Street
Phone: 662.841.9960
National Reservations: 1.800.426.7866

Wingate by Marriott
1320 North Gloster Street
Phone: 662.841.9960
National Reservations: 1.800.426.7866

Red Roof Inn
1516 McCullough Boulevard
Phone: 662.840.3000
National Reservations: 1.800.228.5150

Quality Inn
1190 North Gloster Street
Phone: 662.842.5100
National Reservations: 1.800.466.8356
www.qualityinn.com

Comfort Inn
1532 McCullough Blvd.
Phone: 662.844.4343
National Reservations: 1.800.466.8356
www.comfortinn.com

Metel 6
1500 McCullough Boulevard
Phone: 662.844.1904
National Reservations: 1.800.466.8356
www.metel6.com

Scotish Inn
401 North Gloster Street
Phone: 662.842.1961
National Reservations: 1.800.251.1962

Super 8 Motel
3898 McCullough Boulevard
Phone: 662.842.0448
National Reservations: 1.800.251.1962

Wingate by Wyndham
186 Stone Creek Boulevard
Phone: 662.680.8887
National Reservations: 1.800.228.1000
www.wingatetupelo.com

Fairfield Inn & Suites
3070 Tom Watson Road
Phone: 662.844.2221
National Reservations: 1.800.228.1000

Traveler's Motel
915 North Gloster Street
Phone: 662.844.222



Veterans and Eastwood Softball Complex

Facility Features

- 6 fields with a 300 ft. fence
- 2 fields with a 250 ft. fence
- Temporary fencing for fast pitch distances as required by each association
- JT Neely Center building for umpires and perfect for team check-ins, team and event meeting, and tournament offices. There are two locker rooms and a kitchen as well. Hospitality room suitable for headquarters for multi-field, multi-site tournament use.
- Three pavilions to escape the heat



ASA Nationals

- 2013 Girls' B 10 & Under Southern National
- 2015 Mens' Southern Class D National



USSSA World Series

- 2011 Youth Slow Pitch World Series
- 2012 Youth Slow Pitch World Series



ASA State

- 2015 Junior Olympic Girls' Fast Pitch 12 & Under Class
- 2015 Church State



Mississippi State Softball Fall Ball Games

- 2015 Ole Miss vs Mississippi State Fall Ball Games
- 2017 USA 16U Gold Qualifier



Getting to #MyTupelo

Tupelo is located in Northeast Mississippi and easily accessible by U.S. Highways 45, I-22, and the historic Natchez Trace Parkway.

HOURS/MILES FROM TUPELO:

	hours	miles
MEMPHIS	1.5	100
BIRMINGHAM	2	135
JACKSON	3	190
NASHVILLE	4	200
ATLANTA	4.5	280
NEW ORLEANS	5.5	340
ST. LOUIS	6	370
BILOXI	5	310
NATCHEZ	4.5	290
BRANSON	6.5	370



For more information, contact
Tupelo Convention & Visitors Bureau
662-841-6521
tupelo.net



Tupelo's HealthWorks! Kids' Museum is a hands-on, interactive museum aimed at educating our kids to live healthier lives. A total of 18 curriculum-based attractions are available for kids of all ages to enjoy and it is only the second center of its kind in the United States.

www.healthworkskids.org

HealthWorks! Kids Museum
219 South Industrial Road
Phone: 662.377.5437

The Elvis Presley Birthplace and Museum is Tupelo's signature and most significant landmark. The humble two-room dwelling where Elvis Presley was born is the centerpiece of a 15 acre Elvis Presley Park that includes, among other exhibits and "Elvis at 13" statue and Elvis' childhood church.

Elvis Presley Birthplace, Museum and Chapel
306 Elvis Presley Drive
Phone: 662.841.1245
www.elvispresleybirthplace.com



Tupelo's culinary culture takes the power of possibility to another level with something to satisfy every appetite. From food trucks and dough burgers to farm-fresh creations and fine dining, **Imagine what you can eat here!** Whether you are looking for the perfect ladies' lunch spot, a great burger and live music, lip-smacking barbecue, or a truly memorable dining experience, Tupelo's over 160 restaurants are ready and willing to make your mouth water. Tupelo invites guests to discover the ultimate #tupelofoodie experience by creating your own culinary itinerary at tupelo.net. With new restaurants opening almost weekly, tupelo.net is your resource for the next epic feast. Throw in a little live music at one of the city's many live music venues and let the rhythms of the town that gave rise to the world's greatest entertainer move you. Great meals literally put the icing on the cake in Tupelo, where anything is possible.

RESTAURANTS



@cravetupelo



@3a-productions



@romiesgrocerytupelo



@perryvermelen



@ayakaya0408

The Natchez Trace Parkway, a 444-mile national park with 10,000 years of history, links Natchez to Nashville. It is a national scenic byway, All-American Road and one of the nation's most unique national parks for motorists, cyclists and hikers to enjoy. The Natchez Trace Parkway is headquartered in Tupelo, MS. Phone: 662.680.4027/ 800.305.7417
www.nps.gov/natr and www.scenictracemuseum.com

Natchez Trace Parkway

Tupelo Buffalo Park & Zoo is a unique staple of the City of Tupelo. It is home to over 300 animals representing 87 different species. Feature attractions include the Monster Bison Bus Tour, an open air ride that tours the open grounds of roaming bison, camels, giraffes, yaks, longhorns, and zebras to name a few.

Tupelo Buffalo Park & Zoo

2222 North Coley Road
Phone: 662.844.8709
www.tupelobuffalopark.com

Rebeldes Bowling Center | 625 Robert E. Lee Drive
662.842.1132
An entertainment staple in Tupelo for more than 50 years, Rebeldes includes 22 bowling lanes, a game room, billiards, and concessions. Visit www.rebeldebowling.com for hours and prices.
Splash Pads | Rob Leake City Park (1107 Joyner Street) | Park (80 North Veterans Memorial Boulevard)
Ned to cool off and have some fun? Open seasonally during warmer weather, these splash pads and water features promise hours of fun for everyone!
Tupelo Buffalo Park and Zoo | 2222 North Coley Road
662.844.8709
Home to more than 260 animals, you can also choose from a variety of rides and tours. Don't forget to visit the exhibits including the petting zoo and Chickasaw Indian Village. For admission prices, visit www.tupelobuffalopark.com. Open Monday-Saturday 9 a.m. to 4 p.m. and Sunday 11 a.m. to 4 p.m.

The Mall at Barnes Crossing | 1001 Barnes Crossing Road
662.844.6255
This super regional shopping mall is home to more than 90 specialty shops, five anchor stores, an eight-screen Cinemark movie theater, and 600-seat food court. Open Monday-Saturday 10 a.m. to 9 p.m. and Sunday 12:30 to 6 p.m.

HealthWorks! Kids Museum | 219 South Industrial Road
662.377.5437
An interactive children's educational center that is infectious fun and includes exhibits, a Fun-tastic Floor, and Brain Theater. Open Monday-Friday 8:30 a.m. to 4 p.m. and Sunday 10 a.m. to 4 p.m.

Fairpark District Downtown | East Main Street
In the heart of downtown Tupelo, Fairpark is home to green space, a children's playground, and splash fountain. Snap a photo with the 1956 Elvis Homecoming Statue or Chief Plomingo.

Event Zona Entertainment | 790 Moncreiff Drive | 662.346.4680
A little bit of everything is available at this family entertainment center that features bowling, laser tag, inflatable, bumper cars, arcade games, and concessions. Visit www.eventzona.net for hours and prices.

Cinemark Movies 8 | 1001 Barnes Crossing Road | 662.844.8256
Located at the Mall at Barnes Crossing, this eighth-screen movie complex features luxury loungers with heated and reclining seats, extendable footrests, and cup holders for your favorite drink! Visit www.cinemark.com for tickets and show times.

Ballard Park | 2629 West Main Street
Located within walking distance of the sports complex, head over and enjoy the green space, walking trails, skate park, and playground equipment. You can even feed the ducks!

CHILL MODE

Fairfield Inn & Suites
3070 Tom Watson Road
Sallio, MS 38866
Phone: 662.680.6798
National Reservations: 1.888.236.2427
www.marriott.com/tuphi

Economy Inn
708 North Gloster Street
Phone: 662.842.1213
www.economyinn.com

Super 8 Motel
3993 McCullough Boulevard
Phone: 662.842.4448
National Reservations: 1.800.251.1952

Econodge
401 North Gloster Street
Phone: 662.842.1961
National Reservations: 1.800.251.1952

Roadway Inn
825 North Gloster Street
Phone: 662.844.4444
www.hampton-inn.com

Courtyard by Marriott
1516 McCullough Boulevard
Phone: 662.840.3300
National Reservations: 1.800.426.7866

Commodore Motel
1802 East Main Street
Phone: 662.842.9074
National Reservations: 1.800.424.6423

Comfort Inn
1532 McCullough Blvd.
Phone: 662.840.0490
www.motel6.com

Motel 6
1500 McCullough Boulevard
Phone: 662.844.1904
National Reservations: 1.800.466.8356

La Quinta Inns & Suites
1013 North Gloster Street
Phone: 662.847.8000
National Reservations: 1.800.753.3757

Candlewood Suites
979 North Gloster Street
Phone: 662.553.4649
National Reservations: 1.800.780.7234

Best Western Plus Inn & Suites
3158 North Gloster Street
Phone: 662.847.0300
National Reservations: 1.800.465.4329

Baymont Inn & Suites
625 Spicer Drive
Phone: 662.844.7660
National Reservations: 1.877.229.6668

Holiday Inn Express
1612 McClure Cove
Phone: 662.718.5500
www.holidayinn.com

Hilton Garden Inn
303 East Main Street
Phone: 662.205.4441
National Reservations: 1.800.426.7866

All American Inn
767 East Main Street
Phone: 662.844.5610
<http://www.tupelobarnescrossingsuites.com>

HOTELS



Anything is possible when you plan your trip to Tupelo, Mississippi. Sit on the front porch swing and dream just as a young Elvis did during your visit to the Elvis Presley Birthplace & Museum. Travel a road over 10,000 years in the making along the Natchez Trace Parkway. Listen to live music at one of Tupelo's many live music venues or special events.



The Tupelo Visitors Center is the perfect starting point for any trip to the city where anything is possible. From interactive exhibits that highlight the city's top attractions and a collective timeline of Tupelo's rich history, to displays focused on Elvis' childhood in Tupelo as told like never before, the Tupelo Visitors Center will fully prepare visitors for exploring this unique, southern town.

Visit tupelo.net to create your custom Tupelo itinerary. With 1,600 hotel rooms, over 160 restaurants, and three distinct shopping districts, **imagine what you can do here!**



Tupelo Convention & Visitors Bureau
P.O. Drawer 47
Tupelo, MS 38802

tupelo Soccer





Ballard Park Sportsplex

Facility Features

- 10 full size lighted fields (fields can be painted 110x60 - 120x70 depending on the field)
- 5 small sided lighted fields 90x50
- 1 field (Jim Ballard Stadium Field) has stadium style seating and scoreboard
- Tournament host room with referee room
- Concession stand
- Climate controlled restrooms
- Lots of room for vendor village to be on site
- Two pavillions and .25 mile walking track



2010-2017 TYSA/THS Soccer Classic

2013 Mississippi Soccer Association Kohl's Cup

2014 Premier Soccer Services Girls Cup

2015 Mississippi Soccer Association Presidents Cup

2016 Mississippi Soccer Association State Cup

Mississippi State University Fall Games and Clinics

2018 Mississippi Soccer Association Elite Cup



Getting to #MyTupelo

Tupelo is located in Northeast Mississippi and easily accessible by U.S. Highways 45, I-22, and the historic Natchez Trace Parkway.

HOURS/MILES FROM TUPELO:

	hours	miles
MEMPHIS	1.5	100
BIRMINGHAM	2	135
JACKSON	3	190
NASHVILLE	4	200
ATLANTA	4.5	280
NEW ORLEANS	5.5	340
ST. LOUIS	6	370
BILOXI	5	310
NATCHEZ	4.5	290
BRANSON	6.5	370



For more information, contact
Tupelo Convention & Visitors Bureau
662-841-6521
tupelo.net



Aquatic Center

Facility Features

- Myrtha competition pool - 20 lane/25 yard and 8 lane/50 meter, 5 lane warm up/cool down pool
- 1,000 sq. ft. men's locker room
- 1,200 sq. ft. women's locker room
- Each locker room complete with showers, lavatories and toilets
- Bleacher spectator seating capacity - 971



2014 Mississippi Swimming Long Course State Championships

2014 & 2015 Mississippi High School State Championships

2014 & 2015 Mississippi Swimming Short Course State Championships

2015 USA Swimming Southern Zone Championships

2016 USA Swimming Zone Senior Championships

2016 Mississippi Swimming Short and Long Course State Championships

2017 Mississippi Short Course Championships

2017 Mississippi Long Course Championships

2017 Southern Age Group Championships

2017 Mississippi High School State Championships

2017 USA Swimming Masters

2018 USA Eastern Zone Speedo Sectional Championships

2018 Mississippi High School State Championships



Getting to #MyTupelo

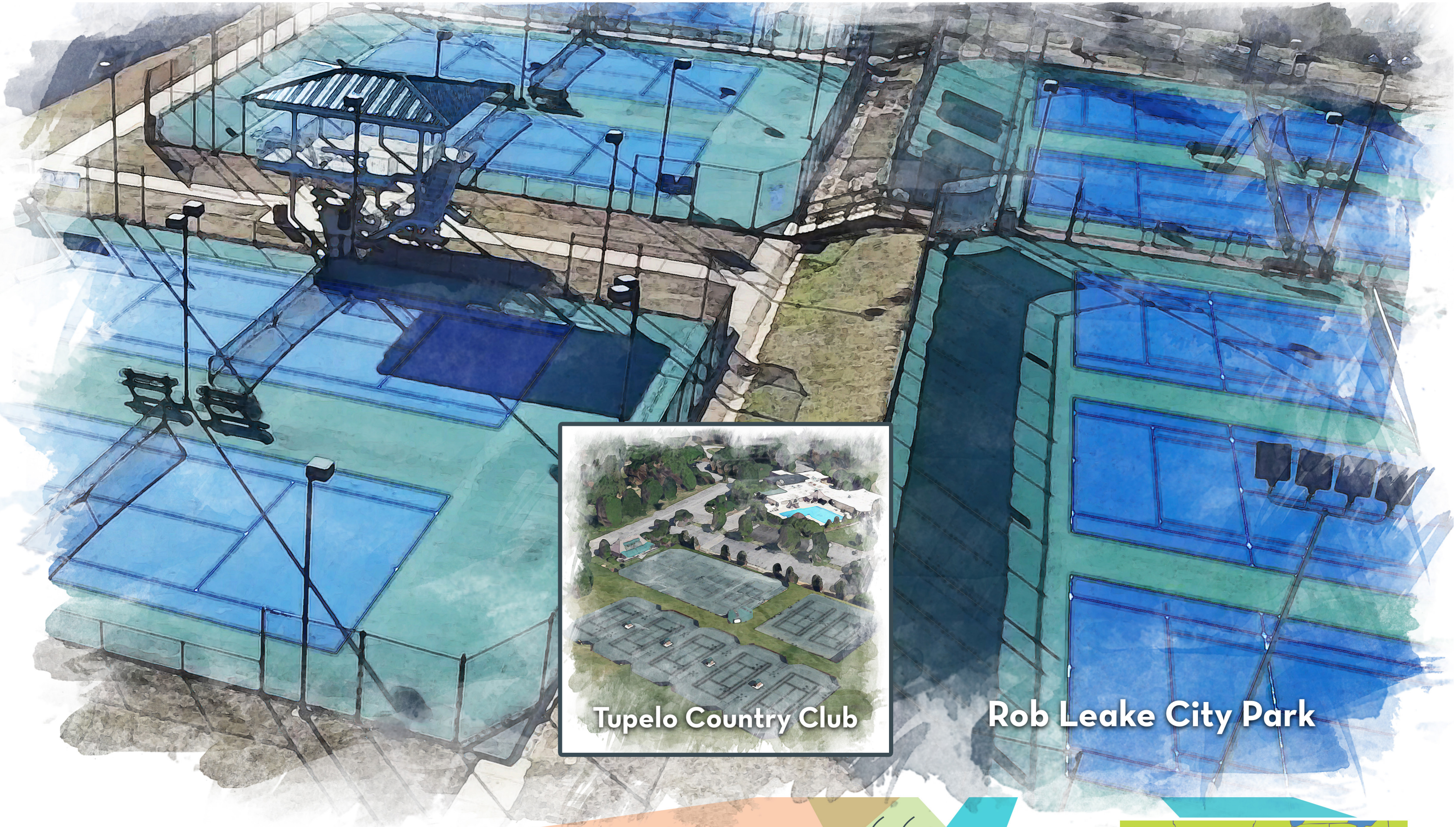
Tupelo is located in Northeast Mississippi and easily accessible by U.S. Highways 45, I-22, and the historic Natchez Trace Parkway.

HOURS/MILES FROM TUPELO:

	hours	miles
MEMPHIS	1.5	100
BIRMINGHAM	2	135
JACKSON	3	190
NASHVILLE	4	200
ATLANTA	4.5	280
NEW ORLEANS	5.5	340
ST. LOUIS	6	370
BILOXI	5	310
NATCHEZ	4.5	290
BRANSON	6.5	370



For more information, contact
Tupelo Convention & Visitors Bureau
662-841-6521
tupelo.net



Tupelo Country Club

Rob Leake City Park



Tupelo Country Club and Rob Leake City Park

2017 and 2018
USTA Adult 55 & Over
State Tournament



2017 and 2018
USTA Adult State
Mixed Doubles Tournament

Because of the high level of hospitality, quality of area attractions, shopping, and accommodations, Tupelo continues to be a leading destination for our USTA League Tennis Championship events. The partnership between the Tupelo CVB, Tupelo Parks and Recreation, and the local tennis community creates an atmosphere for complete success for events of these kind.

- Lindsey Bullard, Director of Adult League Tennis
Mississippi Tennis Association



Getting to #MyTupelo

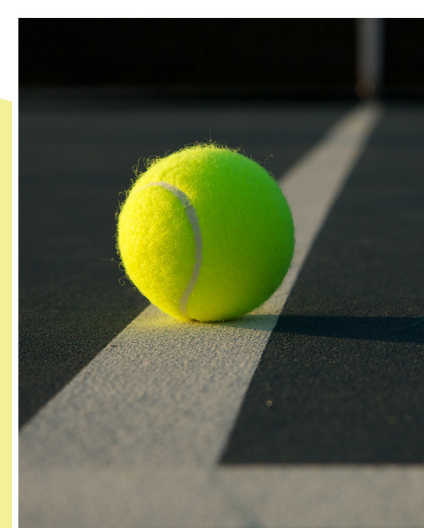
Tupelo is located in Northeast Mississippi and easily accessible by U.S. Highways 45, I-22, and the historic Natchez Trace Parkway.

HOURS/MILES FROM TUPELO:

	hours	miles
MEMPHIS	1.5	100
BIRMINGHAM	2	135
JACKSON	3	190
NASHVILLE	4	200
ATLANTA	4.5	280
NEW ORLEANS	5.5	340
ST. LOUIS	6	370
BILOXI	5	310
NATCHEZ	4.5	290
BRANSON	6.5	370



For more information, contact
Tupelo Convention & Visitors Bureau
662-841-6521
tupelo.net



Rob Leake City Park

Located on Joyner Avenue, this 34-acre park has exceptional facilities for Tennis. This facility has played host to several Mississippi Tennis Association state tournaments, Region 23 Junior College Tournaments, and the Charlie Close Invitational. This facility has 16-lighted courts, including four indoor courts during the winter months, a pro shop where players can buy anything needed to play tennis, and get their rackets restrung or repaired. There are also two pavilions where people can sit and enjoy watching tennis.



Tupelo Country Club

The Tupelo Country Club features a traditional atmosphere and caters to all of the private club amenities you would expect such as seven new Clay Hydro tennis courts.